



NEWSLETTER N° 10 , MAY 2001

Dear Map Friend,

As every May, after the Annual General Meeting , the 'BIMCC News' column carries two significant items : the annual report of the previous year, and the adjustments in the Circle's management and programme. Both underline the large spectrum of topics on maps, atlases, town-views we have covered in the past and will continue to offer to our Members, and demonstrates our determination to become more efficient in the Circle's day-to-day operations. As you will see, our new Treasurer Pierre Mattelaer will also act as Membership Secretary – so please communicate with him directly on all current matters, details on p. 16 . Those of our members who have not yet responded to Pierre's call for renewal of their subscription are invited to do so by 15th August. Membership cards will be sent out with the September Newsletter.

The present issue is also the last one produced in this, shall we say, somewhat antiquated way, (being a true reflection of my limited capacities in this domain) : our new Editor, Brendan Sinnott, will present the September Newsletter in a different, more streamlined format using the most modern publishing techniques. And : hopefully the post of Secretary can be filled soon.

At the end of a long, wintry Spring let me wish you a happy and sunny Summer Season !

WB

CONTENTS

Pictures at an Exhibition

From Surveyor's Chain to GPS.....3

Exploring places with Maps

Public Library Trier, and private
Collection..... 4

Have Map – will travel

Maps in Moscow.....6

Of Mice and Maps

CD-ROMs reviewed8

Review of 3rd Study Session.....7
International Events.....10
Auction Review.....10
BIMCC News and Calendar.....12
Map Evening.....14
Impressum.....16
Sponsors' pages.....2, 16, 17
Registration.....18

BRUSSELS INTERNATIONAL MAP COLLECTORS' CIRCLE (BIMCC)

P. O. BOX 1359, B – 1000 BRUSSELS 1

Tel/Fax ++32- (0)2-772. 69. 09 e-mail : bimcc@bigfoot.com

The BIMCC is pleased to acknowledge sponsorship support from :

Henri Godts

Av. Louise 230/6, B- 1050 Brussels

Tel ++32/(0)2/647.85.48 - Fax ++32/(0)2/640.73.32

Dealer and Auctioneer of rare books, manuscripts, and maps and atlases

Info from : info@godts.com ; Catalogues can be seen on www.godts.com

Next auction Saturday, 13th October 2001

D.R. Duncker

Meÿsberg 12, 4861 BP Chaam (NL)

Tel ++31/16/149.20.08 e-mail dieter.duncker@wxs.nl

Old maps, prints, atlases and illustrated books

La Route du Papier

Av. des Mimosas 83, B-1150 Brussels

Tel ++32/(0)2/733.53.57 – Fax ++32/(0)2/735.59.20 e-mail lrpd@infonie.be

Supplier of equipment and materials for the conservation and restoration of books, maps, prints, photographs, etc.

Galerij der Kempen

Kongoplein 12, B-2300 Turnhout

Tel /Fax ++32/(0)14/41.78.58

Two auctions per year of old books, maps, atlases and works of art

Next auction : 26th May - Catalogue available on request

Antiquariaat Ben Hoepelman

Old maps, atlases and travel books

Domaine de Ferrieres

F-84220 MURS

Tel ++33/490.72.07.06 Fax ++33/490.72.06.97

IRIS ANTIQUE GLOBES / RESTORATION STUDIO

Paul Peters B.V.

Weverweg 9, NL – 6961 Eerbeek

Tel ++31/313-65.44.66 Fax ++31/313-65.58.82 www.paulpeters.demon.nl

Large stock of historically important globes, armillary spheres, planetaria, maps

Restoration of paper, leather, vellum, charters

Pictures at an Exhibition

From Surveyor's Chain to GPS - *Van sleepketting tot GPS* – an interesting exhibition in Ghent

Surveyors and cartographers have always used all kinds of peculiar instruments. They needed these in order to ascertain and determine the distances, the boundaries, the extent or form of the territories by linear and angular measurements applying the principles of geometry or trigonometry. Other instruments were used to determine the longitude and latitude.

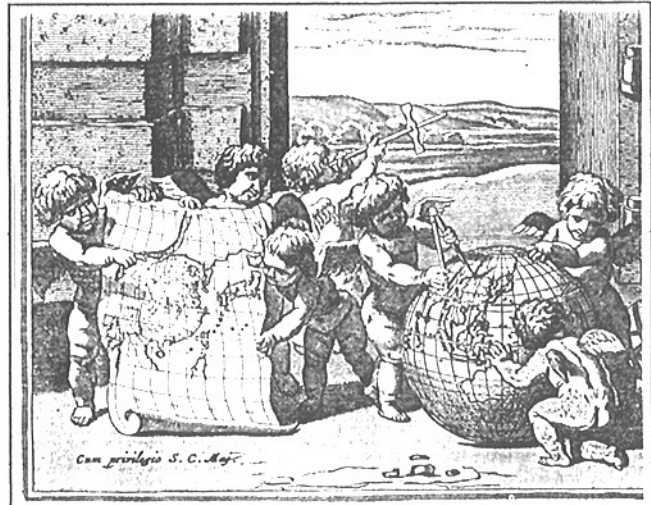
The linear measurements were done by means of a surveyor's chain, rods, and odometers, and the angular measurements by means of a cross staff or back staff, plane tables with alidades, gnomons, theodolites, astrolabes, etc. Other additional instruments included the water level-instruments, the compasses, and also clocks and since 1769 the accurate watch (J. Harrison). Only in the middle of the 19th century came change in this array of instruments thanks to the new techniques acquired after 1850. It is the aim of the exhibition "*Van sleepketting tot GPS*" (From surveyor's chain to GPS) held at the *Museum of Surveyors' Instruments* of the RUG (Rijksuniversiteit of Gent) to display mainly this second generation of instruments, comparing them with some traditional ones.

One sees for instance a classic surveyor's chain (1890) next to an INVAR-wire of 24 meters long on a drum (*invar* is an alloy of nickel and steel with almost no coefficient of expansion for very accurate measurements), or new instruments for optical distance measuring as the Moinot type tachymeter (1880), the Quinemant type with prisms (1922), the Sanguet tachymeter (1951), or the electronic Disto, Leica (1997), all for very precise measuring. With the last one measurements are made within one second up to 100 meters, with a precision of 5 mm!

Next stand shows old and more modern sextants with rapid read-offs and, of course, the already well known GPS instruments (used e.g. in nautical sports): the regular ones and the more advanced for professional use. These are all fine instruments which give very precise readings of angles or of the exact location on earth (tracing longitude and latitude) with a precision of less than 10 m, even down to 1 cm (for the Pentax/Leica 9500 Real-time, 1997)!

Then comes a stand with water levelling instruments starting with the traditional ones fitted with a plumb line or with air bulbs, further levelling tools with so-called collimators (1881) and to end the very sophisticated so-called levelling with what is known as coincidence reading (1960).

Last but not least an entire array of surveyor's poles, prisms, theodolites and compasses, pantometers, Dutch circles (1780), is exposed. The exhibition is finally illustrated by different types of fine maps of the recent time: maps by *L. Capitaine* (1795), *Philippe Vandermaelen*



(1873), *P. Popp* (different cadastral maps of Belgian communes of 1855-1870), a series of maps of historical importance from both World Wars, and finally maps of the "Dépot de la Guerre" which was the precursor of the contemporary MGI (Military Geographical Institute) and the IGN (Institut Géographique National).

Anybody with some interest in the making of maps will enjoy admiring this interesting assembled array of the traditional and more recent instruments for cartographic use. A catalogue is available with an interesting introduction (Dorikens, Dewulf, Demayer) where one may find an explanatory note on the above mentioned instruments. J. De Graeve, known to the members of our Circle for his lecture on map projections on ancient maps (Second Study Session, 19th Feb. 2000), was on the advisory board of this exhibition.

This exhibition is held at the *Museum voor de Geschiedenis van de Wetenschappen*, Krijgslaan 281, S30, B-9000 Gent; whose Director is Professor M. Dorikens. Tel 09-264.49.30. e-mail:

Further reading (extract from the catalogue) :

J.A. Bennett & O. Brown, *The Compleat Surveyor* (Whipple Museum, 1982)

Deumlich F., *Surveying Instruments* (de Gruyter, Berlin – New-York, 1980)

Hewitt R., *Guide to site surveying*. (London, 1972)

H.C. Pouls, *Winkelkruis - Astrolabium - Hollandse Cirkel* (Geodesia, 1979)

De Wulf A., *Cursus Topografie* (RUG, 1984-1985)

Lloyd A. Brown, *The Story of Maps*. (New-York, 1949)

Mosselmans J. et al., *De Landt-meeters van de XVIe tot XVIIIe eeuw in onze Provincies* (Bibl. Albert I, Brussel, 1976)

maurice.dorikens@rug.ac.be

Open: November 20, 2000 – July 31, 2001.

Hours: 10-12.30 and 13.30-17.00 h., weekdays only.

Pierre Mattelaer

Exploring places with maps

Visit of the Freundeskreis für Kartographie in der Stiftung Preußischer Kulturbesitz e.V. to Trier and Bitburg from 30 March to 1 April 2001

The Spring event of the Freundeskreis für Kartographie – let me translate this as Friends of Cartography in the absence of an official translation of the association's name – took the 40 plus participating members first to Trier for a visit on 31 March of the public library and then, on 1 April, to Bitburg to visit the private map and atlas collection of Dr Thomas Niewodniczanski.

A. Guided tour of Trier city and its Library

Trier, or Augusta Treverorum, on its own is already well worth a visit. It lies to day in the Federal state of Rhineland-Palatinate and is the first German city met by the Mosel river after leaving France and flowing along the eastern side of Luxembourg. Founded in the 1st c. BC by the Romans, Trier became the capital of the Western Roman Empire towards the end of the 3rd century comprising Gallia, the Iberian Peninsula, Germania and Britannica. Thus it boasts to-day some of the finest Roman antiquities in Northern Europe amongst which one counts the Porta Nigra, a huge gateway, the Aula Palatina, part of the former imperial palace of Constantine the Great, the Imperial Baths which were the largest in the Roman Empire after the ones of Caracalla and Diocletian in Rome, and an amphitheatre which could seat approximately 20 000 spectators. It is the oldest German city.

It was in these fine historical surroundings and atmosphere that the Freundeskreis met to share a lovely and convivial meal in the evening of 30 March and then to meet the following morning for a visit of the city library.

Maps and Manuscripts

The city library emerged after the closure of the Landesbibliothek (library of the Federal State). After the secularisation of convents and cloisters it was under the supervision of France in the early 19th century. A particularity of the library can be seen in the fact that it hosts first documents from the 8th c. particularly relating to the wedding of Charlemagne. They own 30 Carolingian manuscripts and about 2500 incunabula including a Gutenberg bible. The library contents mostly stem from convents and are in Latin. Quite a number of the manuscripts were obtained by the bibliophile lawyer Johanna Peter Job Hermes who donated in 1830/32 his library of 22 000 volumes to the Trier city library.

We were shown a T-O world map surrounded by 9 circles and depicting the schematised world; a collation volume of manuscripts of the 11th c. coming from the St. Matthias cloister again holding a T-O map containing the words “ Die Welt hat 4 Ecken” (“The world has 4 corners”). We could admire a fragment of a 1440 map of the southern coast of Spain made after Ptolemy; a Giucciardini town atlas; a De Wit atlas of 1661 with all the maps hightened in gold; a Cellarius celestial atlas of 1661 in contemporary colour hightened in gold and a number of more local and regional maps of and around Trier, some of them rare and of high interest, notably the “Topograhie von der Churfürstlicher Residentz-Stadt Trier” drawn by M. Lortz of 1784, and a lovely plan by Seutter of the area.

The Coronelli Globes

The two Coronelli globes, one terrestrial, one celestial, were no doubt the highlight of the visit to the town library. They are dated 1688 and 1693, respectively and were dedicated in 1699 to the Trier Prince Elector Johann Hugo von Orsbeck. Measuring 110 cm in diameter they were restored in 1984 by experts coming from Trier and the Vienna National Library. Splendidly coloured in contemporary colour, they amaze by their movement, the layout of their images and minute detail. The celestial globe contains 24 signs of the zodiac of the Southern and 23 of the Northern Hemisphere with explanations and text in five languages, i.e. Italian, French, Latin, Greek and Arabic. The globes come to the Prince Elector via Holland and it is likely that he donated them to embellish the new library of the Trier Jesuit College. They resided there till 1957 when they were placed into the newly built city library. They are kept in specially made showcases.

The afternoon was spent on a guided city walk. *Those interested in a visit may contact the Stadtbibliothek Trier, Weberbachstrasse 25, D-54290 Trier, Tel. ++49-651/718.24.30. Open between Easter and October from Monday to Friday, 13 – 17 h, Saturday 10 – 13 h ; rest of the year : Wednesdays 13 – 17 h.*

B. The Niewodniczanski Collection

On 1 April, the group, making good use of an ample number of private cars, made their way to Bitburg lying about 35 km Northeast of Trier. The day before we all had received the bad news that our host had been hospitalised some time earlier to undergo a rather difficult surgery on his knee; there had been complications and Thomas Niewodniczanski was not as well as one would have expected.

His wife however, gave participants a warm welcome; despite Thomas' absence everything had been prepared to make the Freundeskreis' visit well worth the effort. Two collaborators of Dr. Niewodniczanski, Ms. Schulte, a librarian and Mr. Kusizca (spelling not confirmed), a young Polish historian, introduced what we were going to see.

Born in Vilnius in 1933, Niewodniczanski over the past 35 odd years has made it his aim to compile what he considered to be the most important artefacts on Polish history in terms of books, atlases, maps, compendia on Polish history, individual documents related to Poland etc. With Polish history so closely related to Germany's, a wealth of German maps and atlases are part of his collection. In summary,

the collection to day comprises some 3 500 individual sheets of maps about Poland and the surrounding areas covering not only Germany but also the Baltic States. The Germanica count about 1 000 pieces, both maps and atlases; there are approximately 20 000 books, atlases, books on geography, on the history of literature and other historical documents, letters and Napoleonica.

The maps on display illustrated the passion, devotion and energy spent on the collection, not to mention the funds and the time needed to put it all together, to collate it, and put it into a systematic order. The show was overwhelming: maps, maps everywhere, wall maps of the world by Visscher, Kaerius, and Waldseemüller, maps of Europe by Hondio and Kaerius, a Kaerius portolan chart of Europe of 1631 representing one plate on four sheets of paper joined before printing – this being the only one known copy –; a sea-chart of Sardinia of 1588 on vellum and Kaerius' Nova et Accurata Geographica Descriptio inferioris Germania; and three (Belgian) Lion Maps.

Regarding atlases, we were fortunate to see several atlases by Mercator, Ortelius, and in excellent condition, a first issue of De Jode's Speculus Orbis Terrarum.

The above items are only a small selection of those on display and struck the undersigned's attention – they were not necessarily the most important by whatever yardstick one could apply.

Some experts in the group stated they had never seen a private collection of this magnitude before, indeed it appears that the Niewodniczanski collection is the largest collection in private hands in Europe, if not worldwide.

The close to three hour visit was concluded with drinks and a gift from the host: a facsimile copy of his map of Germany Nova Germaniae Descriptio.... by George Lily and Michele Tramezzino – Rome 1553.

This had been a cartographic weekend of the kind that would most certainly stay in our minds for a long time.

Rolph Langlais

The BIMCC has also been invited by Dr Niewodniczanski to visit his prestigious collection, and the Circle will be most happy to include this in its future programme – more details in a forthcoming Newsletter.

Have map – will travel

Maps in Moscow • April 2001

Ten days spent in Moscow gave me the opportunity to visit three places where maps are displayed: two museums and a temporary exhibition. I have no knowledge of Russian but I made some effort in the direction of the Cyrillic alphabet. In a few situations it is sufficient to understand the nature of the presented items.

In the **Historical Museum of Moscow** a dozen maps of the city are on display including *Moscovia Urbs Metropolis Totius Russiae Albae* dated 1610 with the name of Sigismundi III in the cartouche, a XVIth c. map headed *MOSCAVW*, a XVIIth century map of Kitaograd and Tsargrad, maps of Moscow dated 1812, 1813, 1856, and a city map dated 1916. The different Moscow maps show the evolution of the city. The early maps present a city surrounded by walls just at the confluent of two rivers; the Moskva flows along the southern side and the Neglina flows along the northwestern fortifications. On a 1598 map a ditch filled with water appears on the eastern wall. A 1613 map shows three concentric ramparts and a Kremlin containing no more city houses, only palaces and churches. On a 1739 map the city has definitely expanded outside the walls.

The **Historical Museum** presents a few maps: Noteburg, Lake Ladoga and the river Neva, the city of Riga during a siege, Novgorod, a Blaeu globe of 1690 under restoration (dia. approx. 1,80 m), maps of the Empire and also a nice little spherical box with a globe inside as well as some topographical instruments like a sundial with a compass.

History and maps: Russian cartography three centuries ago is an exhibition housed in the above-mentioned museum. According to the information received, it will remain open till June 2001. A 12-sheet

pamphlet in Russian is available at the desk.

Approximately forty-five maps and one globe are on display. All of them are from the XVIIIth century. The visitor will find manuscripts and printed maps of Moscow, St Petersburg, the Caspian Sea, the Gulf of Bothnia, the Pont Euxin, the Sea of Azov as well as maps of Europe and the Atlantic ocean, maps of naval combats, a *Plan de bataille in der Moldau*, a 1787 sea chart of the Aleutians Islands with soundings, a map of the siege of Ismaël, now Izmayil at the head of the Danube delta, a 1793 route map of the Empire with distances between stopping places, a 1793 map of the Caucasus Mountains with very fine shading for the ground surface, a 1783 and an 1800 Empire atlas, a Kamchatkan map, different maps of the course of the Volga river, a Konstantino Polia map, and many others.

Among the many aspects that attracted my curiosity were the different longitude references, the transcriptions of names of places in Western Europe with, for example, a distinction between *Luttich* and *Liège*, wind roses with their N, S, W and E designations and various filigrees, decorated cartouches, etc.

Let me add that a **2001 calendar**, 42 x 60 cm, with reproductions of twelve maps from 1549 to 1999, is for sale in museums and important bookshops.

Modern Russian maps are present in the bookshops: maps of the country of course but also maps of Europe and the World with toponyms in Russian (unusual for me in this case). Maps of the XXth century are also for sale in the Izmailovo open-air market, sort of *marché aux puces*.

Pierre C. Parmentier

« BOOKS ON MAPS »
 Review of the Third BIMCC Study Session, 17 – 2 - 2001

Forty map enthusiasts ... and no map at all to be seen! The Third BIMCC Study Session organized on February 17th, 2001 was dedicated to books on maps. During the morning part of this session, four speakers had the mission to present their choice of around ten reference books. The afternoon was dedicated to a book exhibition and sale.

Wulf Bodenstein opened this study session and introduced the speakers: Joost Depuydt from Belgium, Marco van Egmond from the Netherlands, Hélène Richard from France, and Francis Herbert from Britain. He also presented the hand-out especially prepared for the occasion in the form of a bibliography (74 entries) of which some copies are still available (please contact the Circle).

The interesting selection of Belgian books presented by Joost Depuydt (Historian, UFSIA University Antwerpen) followed different themes: the major mapmakers, manuscript maps, cities and countryside, coffee table books and cartobibliography. For the afternoon display, the speaker brought other basic works ^{1,2,3}

Marco van Egmond (Historian of Cartography, Utrecht University) divided the books of his choice into theoretical or methodological works, general works, cartobibliographies and facsimiles. This is an interesting arrangement for the beginning amateur.

Hélène Richard (Director, Département Cartes et Plans, Bibliothèque Nationale de France, Paris) was unfortunately unable to come. Wulf Bodenstein presented her preferences: a first order French research in historical cartography, one theoretical approach of cartography, studies about atlases, portolans, the Cassini

map, postal routes and marine cartography, two companion books to exhibitions.

The picking of Francis Herbert (Curator of Maps at the Royal Geographical Society, London) started where he originated, i.e. with maps of London, and expanded, with another fourteen books, all around: England, British Isles, Europe, North America, the World, the Oceans and the Heavens.

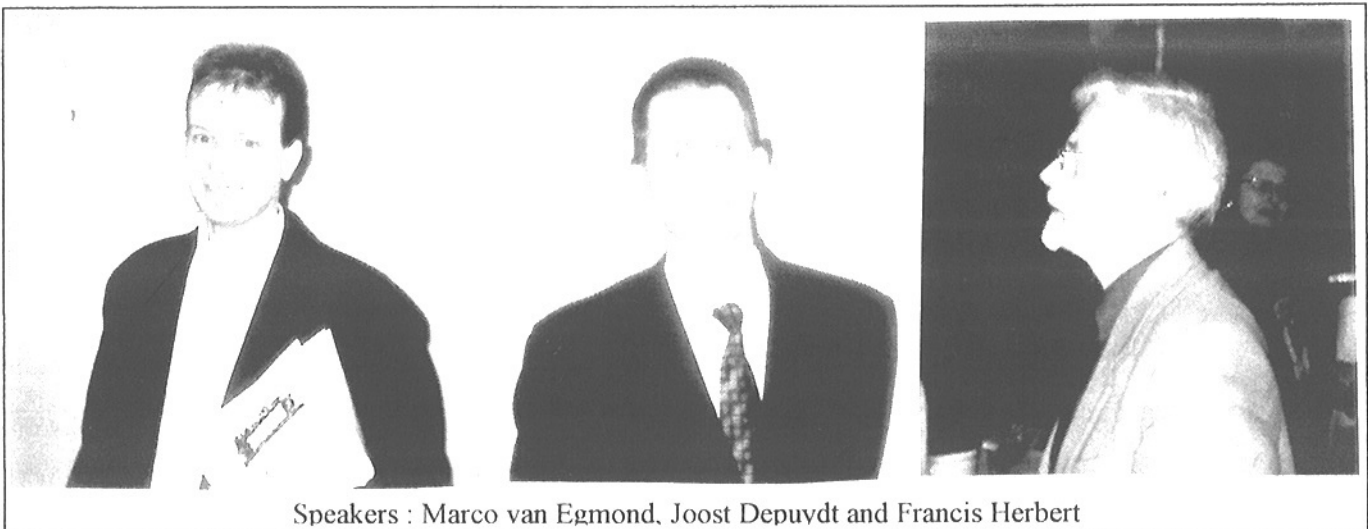
A majority of the books presented are dedicated to the historical aspects of cartography; the probable reason of this resides in the fact that our public is mainly oriented towards ancient maps and not particularly interested in the contemporary production.

Significant in the different choices is the fact that all books are quite recent and generally easily available; from the forty-five books presented, thirty-two were published in the nineties or more recently. It means that the activity in the field of the history of cartography is quite intense in the concerned countries.

But for certain speakers, studies from the years 1980 are already considered as outdated ⁴. In some cases, the maps presented are coming from one source only and other possible sources are not considered despite the fact that the title is general ⁵. According to the comments, many archives and libraries have still to be scrutinized.

Worth mentioning is the fact that many of them are not very expensive books. It is possible to compose a personal collection of reference works for a moderate amount of money. The text itself of certain books is available via Internet ⁶.

It is interesting to note the different ways the



Speakers : Marco van Egmond, Joost Depuydt and Francis Herbert

speakers have categorized the books: it can help the newcomer to start with his readings or his collection.

We have noticed that many books are the result of a collective effort. Individual works are still numerous but the scope of many studies can only be carried by teamwork.

A few books are part of important series; they are items of year-long enterprises; certain are interrupted by lack of support but many others are coming to an end ⁷.

An aspect not to be underestimated with books of reference is the need of indexes (places and toponyms, personal names, analytical, authors, etc.), lists of illustrations, glossaries and bibliographies: they are not always present and this denotes an important omission.

A category of books was not presented during this Study Session: the auction catalogues.

One aspect at least is common to all the authors presented and our speakers (authors themselves...): maps fascinated them all.

Pierre C. Parmentier



Reference Book Exhibition and Sale

¹ *Les militaires et la cartographie des Pays-Bas méridionaux et de la Principauté de Liège à la fin du XVII^e et au XVIII^e siècle* by Claire Lemoine-Isabeau

² *La cartographie du territoire belge de 1780 à 1830 entre Ferraris et le Dépôt de la Guerre de Belgique* by Claire Lemoine-Isabeau

³ *La carte de Belgique et l'Institut cartographique Militaire (Dépôt de la Guerre) 1830-1914* by Claire Lemoine-Isabeau

⁴ *Geschiedenis van de kartographie van Nederland* by Cornelis Koeman

⁵ *Topografische kaarten van Nederland vóór 1750* by M. Donkersloot-de Vrij

⁶ *Antique Maps* by Carl Moreland and David Bannister at

<http://www.antiquemaps.co.uk/book/contents.html>

⁷ *Carte de cabinet des Pays-Bas autrichiens [...]* levée à l'initiative du Comte Joseph de Ferraris edited by Pro Civitate

OF MICE AND MAPS – CD-ROMs reviewed

John Steinbeck isn't around any more to quarrel with my cheap pun – I'll ask his forgiveness, anyway. But it's a fact that many men these days count a mouse, sometimes mice, among their basic equipment for pleasure or for work, be it in the office or at home. Not surprising then that CD-ROMs should have invaded the map specialist's electronic environment also, and I gladly include the Ladies, too.

You may recall that mention was made, during our recent Study Session « Books on

Maps », of the monumental task accomplished by four generations of Cassinis: the establishment of a map of France on a uniform scale (1 : 86.400) in 181 sheets, started in 1760 (on the basis of preliminary survey work dating back to the middle of the 17th century) and finalized only in 1815. Reproductions of these map sheets, each measuring 59 x 90 cm, are still available from the French Institut Géographique National (IGN, 107 rue de la Boétie, F-75008 Paris). The IGN has now gone a step further and reproduced these 181 sheets

on two CD-ROMs, one for the North, the other for the South of France, the border line being roughly between La Rochelle and Geneva. The nine map sheets traversed by this artificial line are, of course, present on both CDs.

On opening the file one finds, side-by-side, a map of France composed of all 181 sheets, to find one's way around the geography. Next to it is a schematic map of France divided into its (modern) Départements, the part being reproduced by the CD (North or South) coloured in yellow. A linear scale bar appears beneath this map. In order to view any part of the Cassini map in detail one can either click into the Département represented on the schematic map or use a scroll-bar at the top to select a specific map sheet by name and number, that is of the Cassini map, not the Département. Into the map thus selected one may zoom using icons displayed, to the point of exceeding original size of map data, which seems a bit superfluous, especially since the data get blurred.

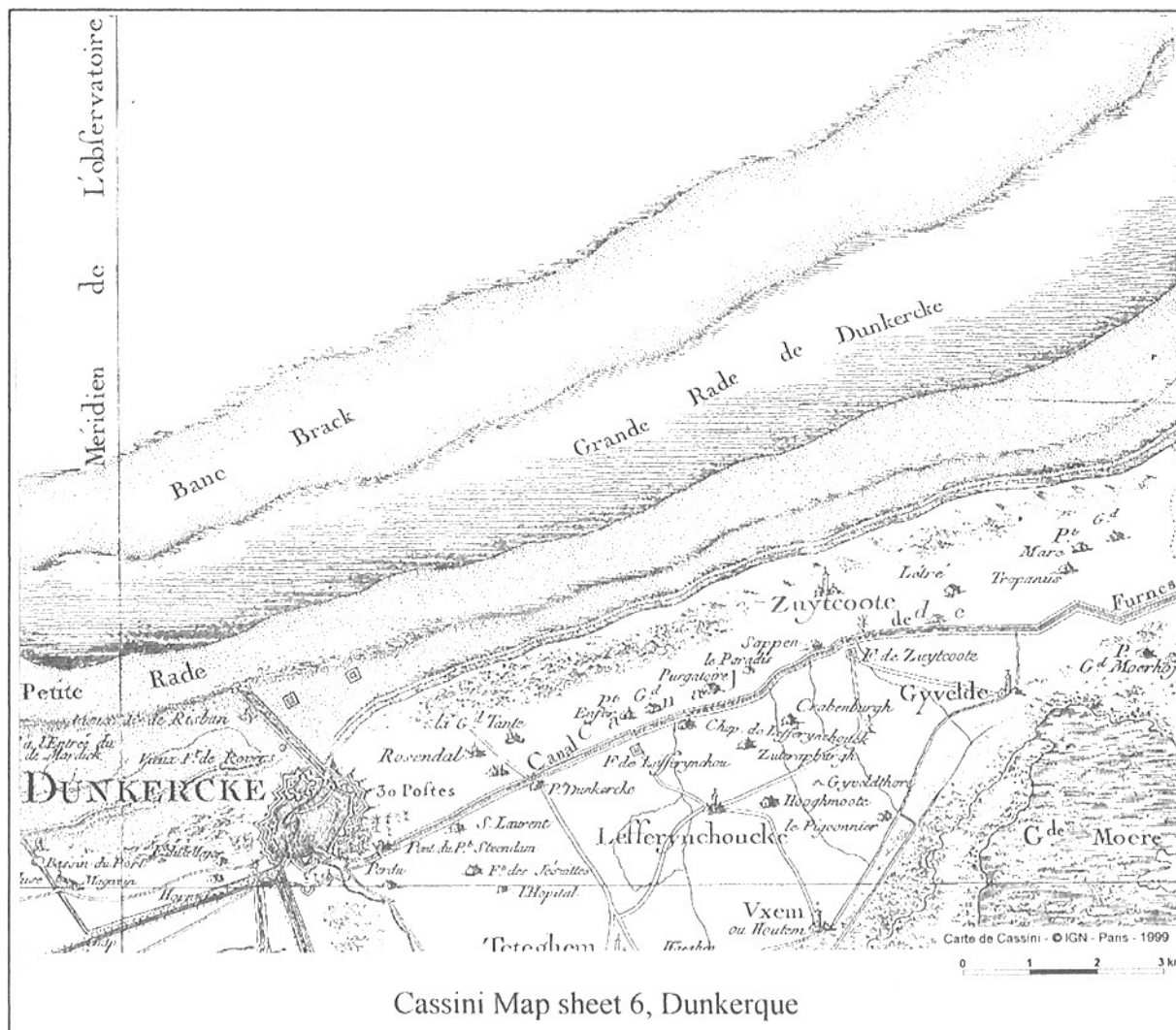
But it's easy to home into a specific part of the map, to select a window of the map displayed

for a print-out (see the illustration), or for further processing. Scrolling in the cardinal directions (North-South, East-West) is fast, regardless of zoom setting; a dynamic scale bar, in km, automatically adjusts to the effects of the zoom.

There are many more features available, especially for editing (and exporting) parts of the map. I happened to discover this twin set of CD-ROMs on a stand at a meeting of Genealogists in France, where the pair were offered for FF 395, whilst a single one sells for FF 245. The companion guide of 10 pages, in French, is well done and proved to be most helpful to beginners like myself.

(Orders from C.D.I.P., 16 rue de la République, F-95570 Bouffemont; Tel ++33-1-34.39.12.12, e-mail fr@cdip.com, web-site www.cdip.com - Note that this Company produces the CDs under licence from the IGN).

Wulf Bodenstein



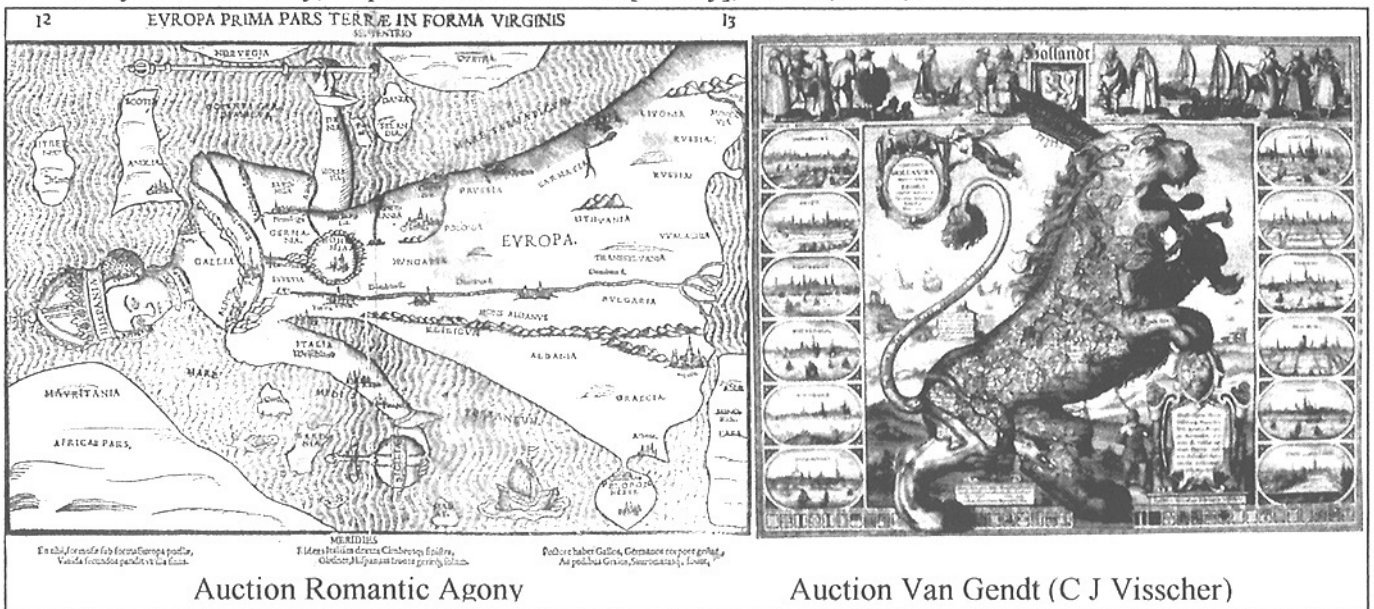
INTERNATIONAL EVENTS in 2001

- ❑ **Museum voor de Geschiedenis van de Wetenschappen** (Museum for the History of Sciences), Gent, 20th November 2000 – 31st July 2001, exhibition organized by Gent University : *150 jaar Landmeetkunde en Cartografie (150 Years of Land Surveys and Cartography)*, Sterrecomplex, Krijgslaan 281 – S30, B-9000 Gent. Every day except week-ends, 10.00-12.30 and 13.00-17.00 Info ++32-(0)9 /264.49.30 (see review in this Edition)
 - ❑ **IMCoS 21st International Map Fair**, 3rd June , The Commonwealth Conference and Events Centre, Kensington High Street, London W 8, 11.00 – 17.30 h., (IMCoS Members admitted as of 10.00 h.); admission free. Info from the Fair Organizer Roger Brown, Tel/Fax ++44-20-8207 6244.
 - ❑ **XIXth International Conference on the History of Cartography**, Madrid, 1st to 6th July 2001, *La cartografía de España e Iberoamerica*, Biblioteca Nacional de España, in collaboration with Imago Mundi; conference conducted in English, French and Spanish, with simultaneous translation between Spanish and English. Info from Biblioteca Nacional de España, Paseo de Recoletos 20, E-28071 Madrid, Fax ++34/915/807.716 e-mail 19.ichc@bne.es
 - ❑ **Museum of Arts and Sciences**, Daytona Beach, Florida, until 15th July : *Myths and Dreams : Exploring the Cultural Legacies of Florida and the Carribbean and Cuba in old Maps*, 1040 Museum Boulevard, Daytona Beach, Florida, USA. Info from Tel ++ 1-386-255.02.85 or visit www.moas.org
 - ❑ **20th International Cartographic Conference**, Beijing, 6th – 10th August, State Bureau of Surveying and Mapping, Sanlihe Road, Beijing 100830, China. Info from Tel ++86-10-6834 6614 / 6833 9095 Fax ++86-10-6831 1564 / 6833 9095, e-mail icc2001@sbsm.gov.cn
 - ❑ **20th International IMCoS Symposium**, Chicago and Milwaukee, 11th – 16th October; Contact IMCoS Conference secretary, The Hermon Dunlap Smith Center for the History of Cartography, The Newberry Library, 60 W. Walton Street, Chicago, Illinois 60610-3380, USA. Tel ++1-312-255.36.59; Fax ++1312-255.35.02; e-mail smithctr@newberry.org
- ⇒ ⇒ *Greetings to the Washington Map Society, and congratulations on the 50th issue of their fine Journal, « The Portolan ». Apart from Mercator's World Magazine, this is the only substantial nationwide US publication on the subject of the history of cartography. Do consult their home page <http://users.supernet.com/pages/jdocktor/washmap.htm> , and make contact with them if you happen to be going over to the U.S. (Tom Sander, the Editor of « The Portolan », can be reached by e-mail : sanderva@erols.com) . The WMS is the most active of all US Map Societies and offers a large variety of map subjects at their meetings, excursions, debates...*

SOME AUCTION RESULTS

- ❖ **Henri Godts, Brussels, 3rd February 2001**
 - S.J. Baalde, *Reis- en Hand-Atlas van Vlaanderen, Braband en aanleggende Landschappen*, Amsterdam, 1780; BEF 70.000
 - J. Lebègue, *Globe céleste dressé par L. Niesten de l'Observatoire de Bruxelles*, Paris, c. 1910, Ø 33 cm; BEF 70.000
 - A. Ortelius, map *Geographia Sacra*, (1st state), Antwerp, 1598; BEF 28.000
 - Joan Blaeu, *Toonneel des Aerdrycx, oft Nieuwe Atlas...*, Amsterdam, 1658, complete with 273 maps, BEF 3.200.000
 - Original copper plate : J-F de la Rue, *Plan de Bruxelles*, 1783, BEF 50.000
 - Ph. Vandermaelen, *Dictionnaire géographique du Luxembourg*, Bruxelles, 1838, BEF 6.000
 - G. Dewautier, map *Carte topographique de Bruxelles et de ses environs*, Paris, 1810, BEF 40.000
- ❖ **Paulus Swaen, Internet Auction, 2nd – 13th March 2001**
 - J. Blaeu, map *Nova et Accuratissima Totius Terrarum Orbis Tabula* , Amsterdam, 1662, US\$ 12.200
 - H. Hondius, map *Nova Totius Terrarum Orbis Geographica*, Amsterdam, 1630, US\$ 6.800
 - J. Speed, map *America with those known parts in that unknowne worlde*, London, 1676, US\$ 6.800
 - Hessel Geritsz., map *Tabula Nautica qua repraesentatur orae maritimae*, Amsterdam, 1612, US\$ 4.550
 - Cluverius, map *Typus orbis terrarum*, Amsterdam, 1676, US\$ 360

- H. Chatelain, map *Carte du Canada ou de la Nouvelle France*, Amsterdam, 1719, US\$ 1.100
- Further results on : www.swaen.com/auction_results.html
- ❖ **Romantic Agony, Brussels, 16th & 17th March 2001**
- Brion de la Tour, map *L'Amérique dressée pour l'étude de la géographie...*, 1764, BEF 10.000
- H. Bünting, allegoric map *Asia secunda pars terrae in forma Pegasi*, late 16th c., BEF 55.000
- H. Bünting, allegoric map, *Europa prima pars terrae in forma virginis*, late 16th c., BEF 160.000
- A. Ortelius, map *Geographia Sacra*, Antwerp, 1598, BEF 24.000
- Janssonius, map *Decem et tria loca confoederatorum Helvetiae*, 13 bird's-eye views on one sheet, Amsterdam, 1657, BEF 18.000
- Liesveldt Bible, map *Die ghelegentheit ende die palen des lants van Beloften*, 1532, BEF 190.000
- N. Visscher, map *Insula Candia olim Creta*, BEF 30.000
- ❖ **Van Gendt Book Auctions, 20th & 21st March 2001**
- N. Visscher II, map *Kennemaria et Westfrisia ...*, Amsterdam, ca 1683, NLG 750
- Braun&Hogenberg, bird's eye view, *Die Stadt Enchuijsen*, Cologne, 1581, NLG 280
- C.J. Visscher, map (one of only 5 copies known), *Comitatus Hollandiae denuo forma Leonis ...*, Amsterdam, 1622, NLG 45.000
- Coutans/Piquet, *Atlas Topographique en XVI Feuilles Des Environs de Paris*, Paris, 1836, NLG 700
- F. de Wit, sea-chart, *Pascaert van Spangie en Portugal*, Amsterdam, 1675, NLG 800
- D. Robert de Vaugondy, map *Britannicae Insula...*, Paris, 1752, NLG 275
- ❖ **Reiss & Sohn, Königstein, 26th-28th April 2001**
- H. Hondius, world map, *Nova totius terrarum orbis ... tabula*, Amsterdam, 1641, DEM 16.000
- A. Ortelius, map *Hispaniae novae sivae magnae, recens et vera descriptio*, Antwerp, 1579, DEM 800
- B. Sylvanus/Ptolemy, map *Prima Asiae Tabula [Turkey]*, Venice, 1511, DEM 5.500



- A. Ortelius, map *Graeciae universae descriptio*, 1610, DEM 1.000
- J.B. Homann, map *Magna Britannia*, ca. 1730, DEM 550
- J. van Keulen, map *Nieuwe Pas-kaert vande oost Kust van Yrland ...*, ca. 1720, DEM 400
- A. Ortelius, map *Flandria*, 1584, DEM 2.500

FORTHCOMING AUCTIONS

- **Paulus Swaen Internet Auctions, 11th – 22nd May and 31st August – 11th September** (see details in Sponsors' List, and note **new Address**)
- **Galerij der Kempen, Turnhout, 26th May** (see details in Sponsors' List)
- **Van Stockum, 15 Prinsegracht, 2512 The Hague, 13th-15th June**
- (Details from Tel ++31-70/364.98.40 Fax ++31-70/364.33.40)
- **Romantic Agony, Brussels, 15th & 16th June** (see details in Sponsors' List)

- **Van Gendt Book Auctions, Brandewijnsteeg 2, 1011 GN Amsterdam, 19th & 20th June**
(Details from Tel ++31-20/623.16.69 ; e-mail info@vangendtbokauctions.nl)
- **H. Godts, Brussels, 13th October** (see details in Sponsors' List)
- **Reiss & Sohn, Adelheidstr. 2, D-61462 Königstein, 24th – 27th October**
(Details from Tel ++49-6174/92.720 ; e-mail reissSohn@t-online.de)

BIMCC NEWS

◆ **3rd Annual General Meeting (22nd March 2001)**

In accordance with Articles 12 and 14 of its Belgian Statutes as a non-profit Association (ASBL/VZW), this year's AGM was held on 22nd March, at the Collège St. Michel, Brussels. President Wulf Bodenstein opened the meeting and obtained approval for the Agenda as published in Newsletter N° 9. The 2000 Activity Report was adopted (see below). On behalf of Treasurer Anne-Marie Luyckx-Hermans, the President presented both the accounts for last year (certified by H. Godts) and the draft budget for 2001 ; the deficit of BEF 14.319 had been resorbed at the beginning of the current year at the end of which it is expected to have a reserve of ca. 30.000 BEF. The meeting endorsed both items.

The meeting then proceeded with the renewal of the Executive Committee ; the following members were elected into office : President : Wulf Bodenstein ; Vice-President : Henri Godts ; Secretary : (to be nominated – the initial candidate, Anne Smith, did not manifest herself) ; Treasurer : Pierre Mattelaer ; Newsletter Editor : Brendan Sinnott ; Public Relations Officer : Henri Godts ; Technical Support for Conferences : Johan Vanvolsem ; Members : Lisette Danckaert and Philippe Swolfs.

In closing the meeting Wulf Bodenstein expressed his warm thanks to all outgoing Members of the Committee, to the supporters of the Circle and in particular to the Sponsors and Benefactors whose benevolent assistance was of vital importance for the continuation of the Circle's now well established programme.

(Subsequent to the meeting Pierre Mattelaer offered to assume the function of Membership Secretary, in addition to that of Treasurer, an excellent combination !)

◆ **Excursion to a Map Collection :** as previously announced, our autumn excursion will take us to the Maritime Museum in Rotterdam on **Saturday 6th October**, when Sjoerd de Meer, the curator of maps, books and ships' models, and a Speaker at our last Conference, will guide us around his Museum in the morning, and show us the highlights of the Museum's collection of 2,500 printed maps , 34 globes and 300 atlases in the afternoon.

The following programme is foreseen :

11.30 - Assemble at the entrance to the Maritime Museum (Leuvehaven 1, 3011 EA Rotterdam, Tel ; ++31-10/413.26.80)

11.30 – 12.30 – Guided tour of the non-cartographic part of the Museum

12.30 – 14.00 – Lunch on your own in the vicinity

14.30 – 16.00 – Guided tour of the map/atlas/globe collection

16.00 - end of visit ; possibility to visit the Hieronymus Bosch exhibition in the near-by Boijmans Museum.

There are very good train connections between Brussels and Rotterdam :

Thalys dep.Br.South 07.34 - arr. R'dam 09.39

or : 09.28

11.09 // dep. R'dam 17.58 – arr. Br. 19.32

Normal trains leave Brussels every H+34 and arrive R'dam +2H+39

For the return, dep. R'dam every H+24 and arrive Brussels +2H+23

For confirmation of the above, please call your local Railways Agent, or the international enquiries of the Belgian Railways on tel. 0900.10.366

Further details, such as how to get from the Rotterdam Centraal Station to the Museum, will follow in the September Newsletter.

Admission is free for Members. The visiting group will be limited to 20 participants ; please use the Registration Form on the last page. Priority will be given to BIMCC Members who register BEFORE 15th AUGUST, on a 'first-come first-served' basis. Should there be some places remaining after that date, the September Newsletter will invite Non-Members to the visit (BEF 500,-). All inscriptions retained will be acknowledged in September.

Annual BIMCC Activity Report 2000

Second BIMCC Study Session : « Understanding Maps » (19-2-2000)

This event, scheduled on 19th February at the Collège St. Michel, was opened by Jan De Graeve with his talk on *Map projections on old maps – from the field work of surveyors to the finished map*. This was followed by a closer look at the *Metric accuracy of old maps*, with which Frans Depuydt examined the maps of Flanders by Mercator and Ortelius. Marcel Watelet took us to the Franco-Belgian border region in the time after Waterloo and explained *The conventional signs on early 19th century maps*. In the concurrent exhibition some original maps and documents pertaining to the science of land surveys (including a Latin edition of Gemma Frisius's *Cosmographia...* of 1567) were on display.

Map Evening (31-3-2000)

The second anniversary of the Circle brought together some 20 map enthusiasts who viewed and discussed a variety of cartographic documents (maps, town views, books with maps), in the traditional and convivial atmosphere of our « Club-room » at the Collège St. Michel . The animated discussions were continued with snacks and a glass of wine.

Excursion to a Map Collection : Bibliothèque nationale de France, Paris (6-10-2000)

A limited group of fifteen BIMCC Members had the unique privilege of being received in the prestigious Map Room of the Bibliothèque nationale by its Director Hélène Richard, whose équipe of five Curators took us in a morning and an afternoon session through the vast map and atlas repository, the most impressive restoration department, the collections of the Geographical Society, with a particular accent on the exploration of Africa, and to the discovery of Nouvelle France, in North America. This most memorable day was rounded off by a special reception laid on by our Sponsors F. Weissert / D. Lebail in the evening on the premises of their 'map shop' near Notre Dame, where quite a few more cartographic rarities were on display.

2nd BIMCC Conference : « From the Low Countries to the High Seas – Dutch maps from the age of discoveries » (9-12-2000)

45 participants stepped aboard at the Collège St. Michel for this memorable voyage into the 16th and 17th centuries, with six eminent carto-historians piloting us into the remote corners of the then known world : Rodney Shirley set the scene with Dutch world maps of the golden age of map making, Monique Pelletier provided an essential connection between cartographers of France and the Low Countries, Sjoerd de Meer evoked the tragic quest for a north-east passage by Barentsz., Uwe Schnall took us around the world with Olivier van Noort, and Hans Kok rounded the Cape of Good Hope towards the East, where Peter van der Krogt offered us a privileged closer look at China through the eyes of Father Martini and Joan Blaeu. Some most remarkable samples of original maps, world maps and sea charts from private collections were on display and attracted a great deal of interest, as did the exhibition of some large wall maps in facsimile.

Administrative Matters

The Executive Committee met on two occasions (including the AGM in February). - Three Newsletters (N° 6 January, N° 7 May, N° 8 September) and two Hand-outs (2nd Study Session, 2nd Intl. Conference) were published. - The BIMCC had a joint stand with IMCoS at the 3rd European Map Fair in Breda, in November. - Fourteen new Members joined the Circle ; the support of 9 Sponsors¹ and 3 Benefactors² was gratefully acknowledged.

Conclusion

The Circle enjoyed an excellent year of progress ; finances are satisfactory, and the outlook is encouraging for continuing the current BIMCC policy offering a varied programme of international events and publications.

Brussels, 22nd March 2001

Signed : W. Bodenstein, President

¹ H. Godts, D. Duncker, La Route du Papier, Galerij der Kempen, Ben Hoepelman, Paul Peters Restoration Studio, D. Lebail/F. Weissert, Romantic Agony, Lydia Cordon

² Cartographica Neerlandica, André Vanden Eynde, Elisabeth Hermans

Aims and functions of the Brussels International Map Collectors' Circle (BIMCC) :

1° Provide an informal and convivial forum for all those with a specialist interest in maps, atlases, town views and books with maps, be they collectors, academics, antiquarians, or simply interested in the subject

2° Organize lectures on various aspects of historical cartography, on regions of cartographical interest, on documentation, paper conservation and related subjects

3° Organize visits to exhibitions, and to libraries and institutions holding important map and atlas collections.

In order to achieve these aims, the Circle organises the following annual events :

- STUDY SESSION in February addressing practical aspects of historical studies, map collecting, carto-bibliography, preservation techniques
- MAP EVENING in March or April, bringing together all those interested in maps and atlases for an informal chat about an item from their collection – an ideal opportunity to get to know the Circle
- One or two EXCURSIONS TO A MAP COLLECTION, September to November

And every second year, in December :

- INTERNATIONAL CONFERENCE on a specific subject of the History of Cartography

Annual Membership BEF 800 (EUR 19.83), Students and under-25's BEF 300 (EUR 7.44) ;

Joining fee (once only) : BEF 300 (EUR 7.44)

Members receive three Newsletters per annum and have free admission to most of the above events, except for a small contribution requested for special events, such as the Map Evening and the Conference (as announced in the Newsletter) - non-Members pay full rates.

TRADITIONAL MAP EVENING

There were 16 of us to sit around the long table at the Collège St. Michel on 22nd March, and the President opened the traditional Map Evening at 18.45 h.

First of all Philippe Swolfs and Otto Chrispeels offered flowers to Dominique

Bodenstein and thanked her in the name of all the members for her very kind and effective assistance to all our reunions.

Jan De Graeve started the presentations with Strabo's "Geographia" (Basel, 1539). A remarkable edition of an important work, being the first translation from Greek into Latin and giving the geographical coordinates of places from the Old World. Or, how to make a description of the world without any map ! Further on, Jan De Graeve showed one of the first representations of Europe as depicted by Lambert of S. Omer in his medieval encyclopaedia entitled "Liber Floridus" (in a modern facsimile edition by Prof. Derolez). In particular, Europe has the form of a quadrant with Rome at the centre.

Brendan Sinott showed a beautiful and well preserved copy, in contemporary colour, of Ortelius's map of his native country, Ireland. Based on Mercator's 1564 wall map of the British Isles, this map was included in the *Theatrum Orbis Terrarum* as of 1573, in an interesting west-orientation.

Next was Philippe Swolfs who compared two maps representing the country of Waes ("Waasland" or



"Pays de Waes"): one by Pieter Verbist of Antwerp, dated 1656 and printed from 5 copperplates, together with another 17th century version of a military map showing the line of defensive posts from Gent to Antwerp as we can find on the map which Fricx published in 1706.

Wulf Bodenstein introduced us to the mythological interpretation of the allegories embellishing the cartouche on Blaeu's map of "La Beausse" (the old French region of "Belsia" around Orleans), and Henri Godts had brought with him an early 19th century example of "cartometrie" of Belgium being a representation of statistical data on maps, in this case relating to ways of communication (roads, railways...) and the volume of traffic on various segments.

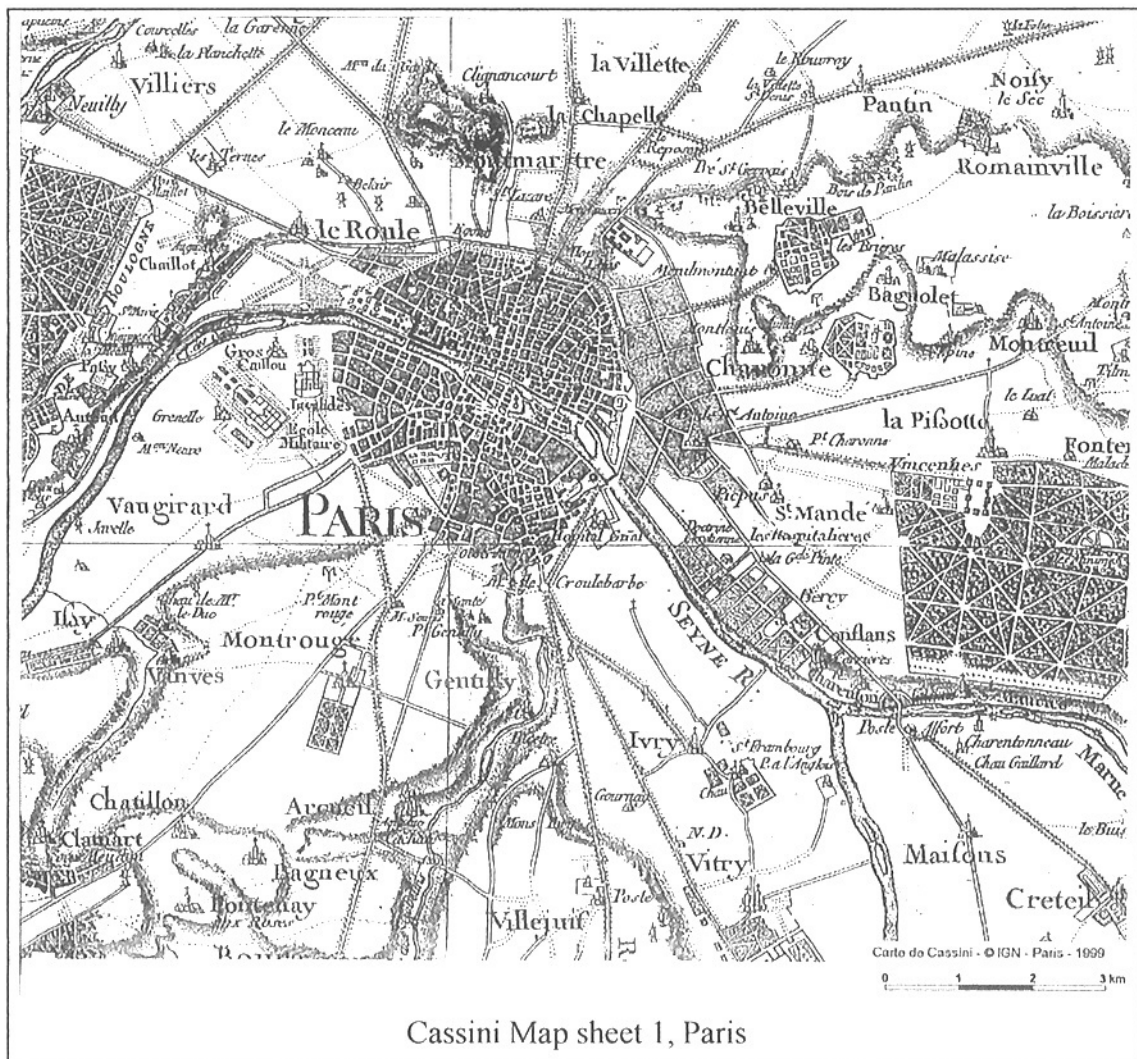
Otto Chrispeels' travellers' plan giving the roads from London to Portsmouth, Chichester and Southampton in the form of strips, was attributed to one of O'Gilby's roadbooks as they were in use in the 17th century. For the

identification of Mr. Malcamp's fragment of an 18th century general map of the XVII Provinces, members suggested to consult van der Heyden's new carto-bibliography on the subject.

Lisette Danckaert and our President drew our attention to some curiosities : both had brought along maps printed on silk and on linen, which were used by pilots during World War II . Such maps have the advantage of being more resistant to wear and tear than paper in difficult, often combat, conditions, and can be stowed away readily. They covered areas in northern Europe (Lisette's silk scarf) and parts of the Anglo-Egyptian Sudan.

Once again, the large variety of cartographic documents animated the discussions which continued well into the evening around sandwiches and a glass of wine.

Henri Godts



BIMCC PROGRAMME FOR 2002

➤ Please note : all dates still to be confirmed

- ◆ 4th Study Session : Saturday 23rd February , working title « Cartography with a purpose : Maps for Strategies in times of war and peace »
- ◆ Map Evening : Saturday 13th April, preceded by Annual General Meeting,
- ◆ Excursion to a Map Collection : October
- ◆ Third biennial International Conference : Saturday 14th December , working title « Mare Internum - Maps of the Mediterranean »

The BIMCC currently publishes three Newsletters per year, in January, May and September. Please submit calendar items and other contributions by 15th August for the September edition to the Editor :

➤ **Brendan Sinnott, 35 Ave. Marquis de Villalobar, B-1150 BRUSSELS**
Tel. ++ 32-2-770.40.83 (home), e-mail : brendan.sinnott@cec.eu.int

Special thanks to our Benefactors :

Elisabeth Hermans
Old Maps and Prints
Grand Sablon 8-9 Grote Zavel, B-1000 Brussels
Tel++32-(0)11/31.17.19 Fax++32-(0)11/31.66.96
GSM 075.613.853
 Open Saturday 11 – 18 Sunday 11 - 13

<p style="text-align: center;"><u>Cartographica Neerlandica</u> (The Ortelius Specialist) Soestdijkseweg 101, 3721 AA Bilthoven (NL) Tel ++31/30/220.23.96 -- cart.neer@tip.nl http://www.tip.nl/users/cart.neer http://www.ortelius-antiquemaps.com</p>	<p style="text-align: center;"><u>André Vanden Eynde</u> 59, rue de Stassart, B-1050 Brussels Tel ++32/(0)2/514.40.47 Maps, prints, views of all parts of the world <i>Specialist for plans and views of</i> <i>Brussels</i></p>
---	---

BIMCC Executive Committee

President : Wulf Bodenstein, 71 Av. des Camélias, B-1150 Brussels; Tel/Fax ++32-(0)2-772.69.09

e-mail bimcc@bigfoot.com

Vice-President : Henri Godts;

Secretary : to be nominated ;

Treasurer and Membership Secretary: Pierre Mattelaer, 29 Burgemeester-Nolf-Straat, B-8500 Kortrijk,

Tel++32-(0)56/21.20.86 Fax ++32-(0)56/21.34.19 e-mail pierre.mattelaer@village.uunet.be

Public Relations : Henri Godts, Av. Louise 230/6, B-1050 Brussels,

Tel ++32-(0)2-647.85.48 , Fax ++32-(0)2-640.73.32 e-mail info@godts.com

Editor of the Newsletter : Brendan Sinnott, 35 Ave. Marquis de Villalobar, B-1150 Brussels,

Tel. ++ 32-2-770.40.83 (home), e-mail : brendan.sinnott@cec.eu.int

Technical Support for Conferences : Johan Vanvolsem ;

Officers : Lisette Danckaert, Philippe Swolfs ;

Scientific Advisor : Hossam Elkhadem.

➤ **Please note : NEW Bank account : KBC Bank, B-8500 Kortrijk, N° 460-0507271-01**

The BIMCC is pleased to acknowledge sponsorship support from :

D. Lebail – F. Weissert
5, rue Lagrange, F-75005 Paris
Tel ++33/1/43.29.72.59 – Fax ++33/1/40.46.85.57
Large stock of old maps and prints
Old and modern books

The Romantic Agony Book Auctions
Aquaductstraat 38-40, B-1060 Brussels
Tel ++32/(0)2/544.10.55 Fax ++32/(0)2/544.10.57
auction@romanticagony.com

Old and modern rare books, prints, autographs, manuscripts, maps and atlases
 NEXT AUCTION : 15th & 16th June 2001

Lydia Cordon
Prints and Frames
Bosmanslei 6, B – 2018 Antwerpen
Tel ++32/(0)3/237.92.39 Fax ++32/(0)3/237.12.69
MAPS AND TOWN VIEWS 17th to 19th CENTURIES

WELCOME TO OUR NEW SPONSORS

Paulus Swaen Internet Map Auctions
March - May – September – November
Maps, Globes, Views, Atlases, Prints
 Catalogue on www.swaen.com e-mail paulus@swaen.com
 ➤ **NEW : Tel ++33-6 8946.2340 Fax ++33-1-34.78.21.59**
 Next auctions : May 11 – 22 ; August 31 – Sept. 11

Sanderus Antiquariaat
F. Devroe
Old maps, atlases and prints
Neder Kouter 32 – B-9000 Gent
Tel ++32-(0)9/223.35.90 Fax ++32-(0)9/223.39.71 Sanderus.ant@pi.be

MEMBERSHIP APPLICATION FORM

NAME.....First Name.....

ADDRESS.....

Telephone.....Fax.....

e-mail :.....

SUBSCRIPTION :

- Joining Fee (payable once only) BEF 300,- (EUR 7.44)
- Annual Membership.....BEF 800,- (EUR 19.83)
- Students and Junior Members under 25 no joining fee
- Students'/Junior's annual membership..... BEF 300,- (EUR 7.44)

PAYMENT : **TOTAL : BEF.....**

- I enclose a Eurochèque payable to the BIMCC in Belgian Francs
- I will transfer the amount to the **BIMCC's NEW bank account** with the KBC Bank, B-8500 KORTRIJK, N° 460-0507271-01, mentioning « Membership »

My particular areas of interest are :.....

Date..... Signature.....

Please send to Membership Secretary

➤ **PIERRE MATTELAER, 29 BURGEMEESTER-NOLF-STRAAT, B-8500 KORTRIJK**
tel ++32-(0)56/21.20.86, Fax ++32-(0)56/21.34.19, e-mail pierre.mattelaer@village.uunet.be

REGISTRATION FORM

BIMCC Excursion to the Maritime Museum, Rotterdam
Saturday, 6th October 2001

NAME.....First Name.....

ADDRESS.....

Phone/Fax/e-mail.....

please tick: I am a BIMCC Member, up-to-date with my membership contribution (Admittance free)

Date..... Signature.....

PLEASE SUBMIT BEFORE 15th AUGUST TO : Membership Secretary

➤ **PIERRE MATTELAER, 29 BURGEMEESTER-NOLF-STRAAT, B-8500 KORTRIJK**
tel ++32-(0)56/21.20.86, Fax ++32-(0)56/21.34.19, e-mail pierre.mattelaer@village.uunet.be

➤ Participation is limited to 20 Members ; non-Members will be admitted if places are available after 15th August – watch out for an announcement in the September Newsletter.